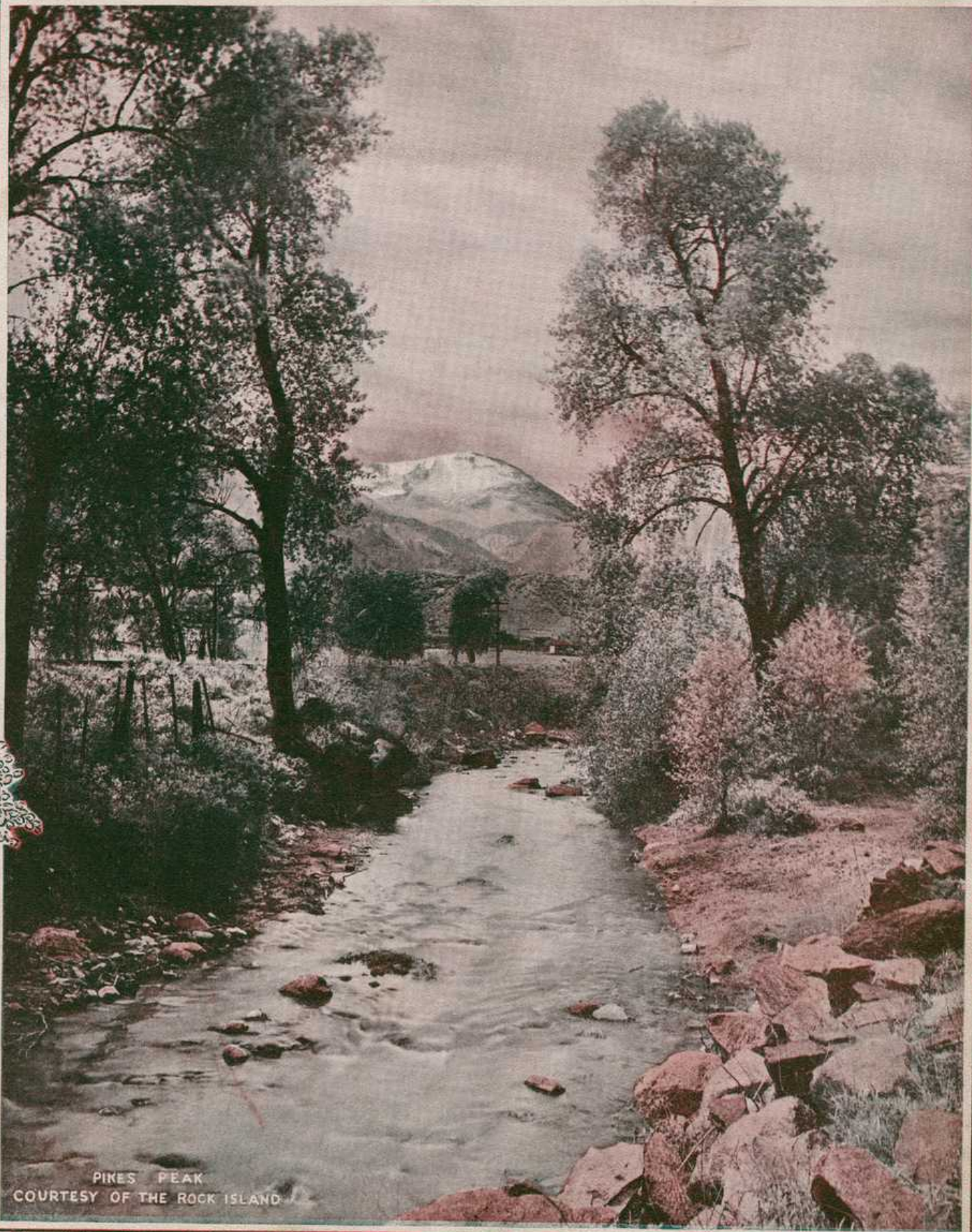


# YOUR ABSENCE MAKES ME LONELY

LYRIC  
BY  
MARVIN LEE

MUSIC  
BY  
ABE OLMAN



PIKES PEAK  
COURTESY OF THE ROCK ISLAND

ENTERPRISE MUSIC SUPPLY CO.

145 W 45<sup>TH</sup> ST  
NEW YORK CITY N.Y.

A H GOETTING  
SPRINGFIELD, MASS.

VINTON MUSIC PUB. CO.  
BOSTON & NEW YORK

A. H. GOETTING

317-319 SO. WABASH AVE.  
CHICAGO, ILL.

COUPON MUSIC CO.  
611 WASHINGTON ST.  
BOSTON, MASS.

Dedicated to J. H. ELLIS, Boston, Mass.

# VALSE ELLIS

By ABE OLMAN

**Andante**

*p* *rall* *a tempo* *rall* *mf accel*

**Tempo di Valse.**

*rit* *p*

*f<sub>2</sub>* *f<sub>2</sub>*

*p* *cresc.*

*dim.*

Copyright MCMXV by Reinhard D. Fuchs  
British copyright secured

Dedicated to Grace Le Boy.

# Your Absence Makes Me Lonely

3

(THAT'S A SIGN THAT I LOVE YOU)

Lyric by MARVIN LEE

Music by ABE OLMAN

*Valse Moderato*

*mf*

*rall e dim.*

*p*

*rit.*

*p*

At night I sit a - lone and sigh, I'm  
I miss the love - light in your eyes, I

think - ing, dear, of you. Since you have left, I  
miss those moon - light walks. I miss your love that

al - ways cry, For one I love so true. And  
nev - er dies, I miss those June night talks. I

each hour seems an age to me, I miss your  
 want to hold your hand in mine And crown love's

smile your kiss; I'll love you to e -  
 sto - ry too, I want to pledge our

ter - ni - ty, That's why I tell you this.  
 love di - vine 'Cause I'm in love with you.

*rit.*

CHORUS

*p-f*  
 Your ab - sence makes me lone - ly, Your pre - sence makes me

gay, I'm hap - py when your near me I'm sad when

you're a - way. Don't let me sigh for - ev - er, You

know my heart is true, Your ab - sence makes me lone -

ly, That's a sign that I love you. Your you.

*rall* *rit.*

# "You Can't Forget Your Mother When the Heart Turns Home"

Words by  
ARTHUR E. BUCKNAM

Music by  
JACOB HENRY ELLIS

A - round the cot - tage door, the vines cling as of yore, There's a

moth - er who waits all a - lone. Her face so kind - ly fair, all

crowned with silv' - ry hair, You can't for get your moth - er, when the

heart turns home.

*rall.* *rall.*

You Can't Forget Mother

Copyright, MCMXV, by the Vinton Music Pub. Co.  
Boston & New York

BEAUTIFUL BALLAD  
ON SALE WHEREVER MUSIC IS SOLD