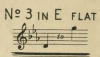


Relay Records.

Sung by
Mesdames ALICE ESTY, SUZANNE ADAMS & PERCEVAL ALLEN.
Also by Mesdames FLORENCE SCHMIDT, YVONNE DE ST ANDRE, FRANCINE DEWHURST
GRAINGER KERR, BERTHA ROSSOW AND Messrs KELLEY COLE,
HENRY BOULDERSON, RICHARD GREEN, &c.



SUNBEAMS

SONG

The Words by

R. H. ELKIN

The Music by

LANDON RONALD

Popular Songs by the same Composer

- | | |
|---|---|
| DAPHNE'S LOVE..... E♭ (D to E♭) F, G | MORNING (from Summertime)..... C (C to E), E♭ |
| DAFFODILS ARE HERE..... E♭ (B♭ to E♭) F, G | NOBODY KNOWS..... E♭ (B♭ to E♭) F, G |
| DOLLY O'DEAN..... C (C to E), D, E | SUNBEAMS..... C (B to E), E♭ |
| EVENING (from Summertime)..... D (C♯ to E), F | WHITE HEATHER..... C (C to E), D |
| O LOVELY NIGHT (from Summertime) B♭ (B♭ to D), D♭ | WISE FOLLY..... C (A to D), E♭, F |
| FOUR SONGS OF THE HILL 2 Keys 3/4 net | SUMMETIME (SONG-CYCLE) 2 Keys 3/4 net |
| Sung by Miss MURIEL FOSTER | Sung by Mr BEN DAVIES |
| SIX LOVE SONGS 2 Keys 3/4 net | |

Copyright

Price 60¢

G. RICORDI & Co
14 EAST 43RD STREET
NEW YORK

Sole Agents for ENOCH & SONS London

Copyright MCMII By Enoch & Sons

SUNBEAMS.

Sunbeam, sunbeam, where are you going,
Leaving the deep blue skies?
You'll lose your way on the earth below
When the fading daylight dies.
But the sunbeam peeped through an open door,
And lightened a shadow there,
Then rested awhile and found a home
In the glint of a baby's hair.

Sunbeam, sunbeam, where are you going?
Tell me, that I may know
Where the mead will turn a deeper green,
And the roses brighter grow.
But the sunbeam hurried upon its way,
As a shaft from Cupid flies,
And next I saw it shining out
From the light of a maiden's eyes.

Sunbeam, sunbeam, the chase is over,
You are a prisoner now,
Though your bonds are light as the crystal chain
That hangs from the dew-kiss'd bough.
Sunbeam, sunbeam, now I have caught you,
Never again will you rove,
For I found you and bound you for ever to me
In the heart of my own true love!

R. H. ELKIN.

The sole and exclusive liberty of making manuscript or other copies of copyright works is vested in the owner of such copyright, and any other persons making such copies without the permission of the said owner render themselves liable to heavy penalties or damages.

The transposition of copyright songs into other keys without permission is an unlawful copyright.

SUNBEAMS.

SONG.

Words by
R. H. ELKIN.

Music by
LONDON RONALD.

Allegretto con moto.

VOICE.

PIANO.

f

Detailed description: This system contains the first two measures of the song. The vocal line is on a single staff with a treble clef and a key signature of two flats (B-flat and E-flat). It begins with a whole rest. The piano accompaniment is on a grand staff (treble and bass clefs) with a key signature of two flats. It starts with a piano (*f*) dynamic and features a melody in the right hand and a bass line in the left hand.

Sun - beam, sun - beam,

poco rall: *a tempo* *p*

Detailed description: This system contains the next two measures. The vocal line continues with the lyrics "Sun - beam, sun - beam,". The piano accompaniment includes tempo markings: *poco rall:* (poco rallentando) and *a tempo* (return to tempo). A piano (*p*) dynamic marking is also present. The piano part continues with a steady accompaniment.

where are you go - ing, Leav - ing the deep blue skies? You'll

Detailed description: This system contains the final two measures of the song. The vocal line concludes with the lyrics "where are you go - ing, Leav - ing the deep blue skies? You'll". The piano accompaniment continues with the same accompaniment pattern as the previous systems.

cresc.

lose your way on the earth be - low, When the fad - ing day - light

cresc.

poco rall: *a tempo*

dies. But the sun - beam peep'd through an o - pen door, And

poco rall: *a tempo*

poco rit:

light - ened a sha - dow there, Then rest - ed a - while and

a tempo *poco rall:* *p*

found a home, In the glint of a ba - by's hair.

p *poco rall:* *a tempo*

p

Sun - beam, sun - beam, where are you go - ing? Tell me that I may

know Where the mead will turn a — deep - er green, And the

cresc.

f *poco rall.*

ro - ses bright - er grow; But the sun - beam hur - ried up -

f *poco rall.*

- on its way, As a shaft from Cu - pid flies, And

ff poco rit.

next I saw it shin - ing out From the light of a mai - den's

poco rall.

f

colla voce

p

Più lento.

eyes. Sun.beam, sun.beam, The chase is o - ver,

p

p più lento

più forte

You are a pris.o - ner now ——— Though your bonds are light as the

più forte

rall.

cry - stal chain That hangs from the dew-kiss'd bough. Oh!

rall.

f *tempo primo*

Sun - beam, sun - beam, now I have caught you, Ne - ver a - gain will you

cresc.

rove, For I found you and bound you for e - ver to me In the

cresc.

cresc. *ad lib.*

heart, In the heart of my own true

cresc. *colla voce*

love.

f *presto*

E. N. S. 2901

The sole and exclusive liberty of making reproductions of copyright works is vested in the owner of such copyright, and any other persons making reproductions without permission of the said owner render themselves liable to heavy penalties or damages. The transposition of copyright songs into other keys without the permission of the said owner is an infringement of the copyright.

ENOCH & SONS, 11 & 115 St. Marlborough Street, London, W. (H)

No 1 IN B^b



No 2 IN C.



No 3 IN D.



No 4 IN E^b



Little Red House on the Hill

SONG

THE WORDS BY

URSULA BLOOM

THE MUSIC BY

Edmund La Touche

Copyright

Price 60 cents

NEW YORK:
G. RICORDI & Co,
14, East 43rd Street.

SOLE AGENTS FOR
ENOCH & SONS, LONDON.

ALL RIGHTS RESERVED INCLUDING RIGHTS OF REPRODUCTION BY MECHANICAL INSTRUMENTS.

Copyright, MCMXIII, by Enoch & Sons.

CABLE	50 COPIES	100 COPIES	250 COPIES
CODE	HEEL	HEELED	HEELS

M1

.58

II Love

LL-551-2-151-0466